

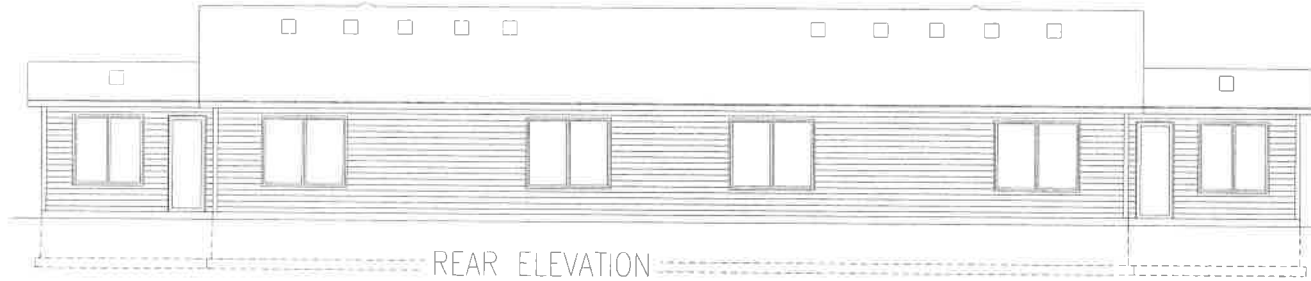
JEROMIO



SIDE ELEVATION
SCALE=1/4"



SIDE ELEVATION
SCALE=1/4"



REAR ELEVATION
SCALE=1/4"



FRONT ELEVATION
SCALE=1/4"

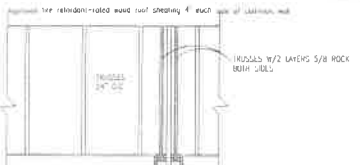
Bigelow and Lennon Construction, LLC
211 1st St. SW
Byron, MN 55920

PROGRESSIVE PLAN
DESIGN LLP
ARCHITECTURAL ARCHITECTURE
1001 1st St. SW, Suite 100
Byron, MN 55920

ACCEPTED FOR RECORD
BY THE CITY OF BYRON
ON 11/11/2019
RECORDING FEE \$150.00
RECORDED 11/11/2019
BY THE COUNTY OF WATKINS
RECORDING FEE \$150.00
RECORDED 11/11/2019
BY THE COUNTY OF WATKINS

BIGELOW/LENNON
H.O.Z. 2ND L-12.11 B-2

3-28-19
NOTED
1911227
NOTED



HOUSE PARTY WALL

64 Year No. R7-3425
 2 Hour fire 55-59 STC Sound
 Base layer 1" type X gypsum wallboard applied at right angles to each side of double 2x4 wood studs 16" o.c. on separate plates 1" apart with 4x4 coated nails 12" long @ 16" o.c. about 1" heads & 4" o.c. staggered each layer and side. Sound tested with 3" glass fiber insulation in stud space on one side and with nails for base layer exposed 1/2" o.c.

SINGLE RAIL HORIZONTAL JOINTS
 NO FLASHING ON MECHANICAL COOP IN PARTY WALL
 OUTLET BULBS ON OPPOSITE SIDES OF WALL SHALL BE SEPARATED BY A HORIZONTAL DISTANCE OF NOT LESS THAN 24"

SHALLOD PANEL LENGTH TABLE
 BASED ON WIND SPEED ($C_{60}mp$)

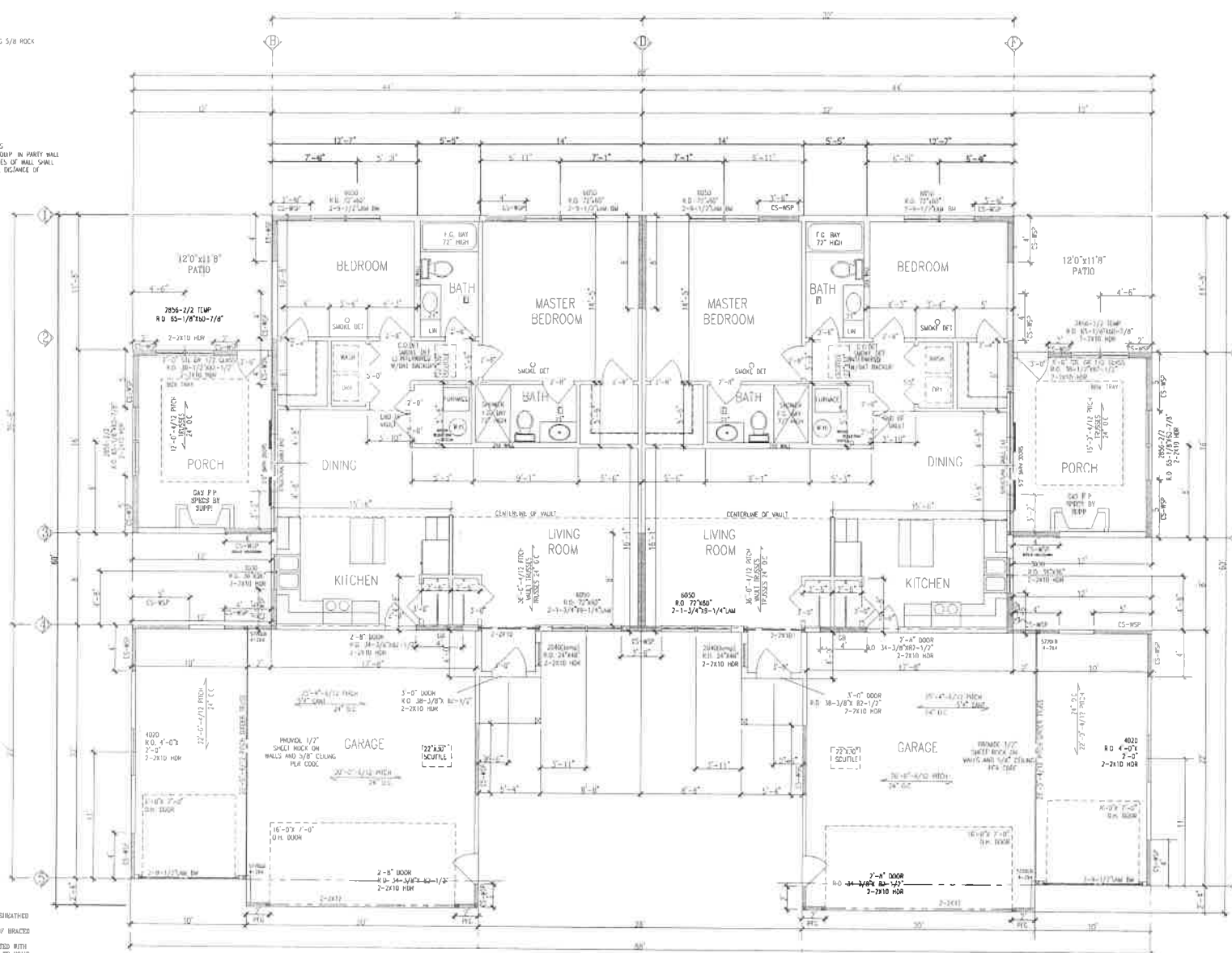
Panel Size	WIND SPEED (MPH)	WIND PRESSURE (PSF)	WIND FORCE (LBS)	WIND FORCE (LBS)	WIND FORCE (LBS)	WIND FORCE (LBS)	WIND FORCE (LBS)	WIND FORCE (LBS)	WIND FORCE (LBS)
CS-WSP	10	1.6	1.6	0.90	1.6	0.90	1.6	0.90	1.6
CS-WSP	15	2.7	2.7	1.0	0.90	1.5	4.1	6.3	
CS-WSP	20	3.8	3.8	1.0	0.90	1.5	3.3	8.9	
CS	30	7.2	7.2	1.0	0.90	1.0	18.3	28.9	
PP-C	30	7.2	7.2	1.0	0.90	1.0	5.5	6.1	
PP-C	30	7.2	7.2	1.0	0.90	1.0	5.5	6.1	

SHALLOD PANEL LENGTH TABLE
 BASED ON WIND SPEED ($C_{60}mp$)

Panel Size	WIND SPEED (MPH)	WIND PRESSURE (PSF)	WIND FORCE (LBS)	WIND FORCE (LBS)	WIND FORCE (LBS)	WIND FORCE (LBS)	WIND FORCE (LBS)	WIND FORCE (LBS)
CS-WSP	10	1.6	1.6	0.90	1.6	0.90	1.6	0.90
CS-WSP	15	2.7	2.7	1.0	0.90	1.5	7.4	11.6
CS-WSP	20	3.8	3.8	1.0	0.90	1.5	7.2	12.0
CS	30	7.2	7.2	1.0	0.90	1.0	16.2	18.0
CS-WSP	30	7.2	7.2	1.0	0.90	1.0	7.2	12.0
CS-WSP	30	7.2	7.2	1.0	0.90	1.0	7.4	19.0

TENSION STRAP CAPACITY FOR WIND PRESSURE REQ. FOR PH/PP/CS AND CS-WP

WIND SPEED (MPH)	WIND PRESSURE (PSF)	WIND FORCE (LBS)	WIND FORCE (LBS)	WIND FORCE (LBS)	WIND FORCE (LBS)	WIND FORCE (LBS)	WIND FORCE (LBS)
10	1.6	1.6	0.90	1.6	0.90	1.6	0.90
15	2.7	2.7	1.0	0.90	1.5	7.4	11.6
20	3.8	3.8	1.0	0.90	1.5	7.2	12.0
30	7.2	7.2	1.0	0.90	1.0	16.2	18.0
30	7.2	7.2	1.0	0.90	1.0	7.2	12.0



1,367.00 SQ. Ft.
 MAIN FLOOR PLAN
 SCALE 1/4"=1'-0"
 8'-1/8" PLATE

1,367.00 SQ. FT.
 MAIN FLOOR PLAN
 SCALE 1/4"=1'-0"
 8'-1/8" PLATE

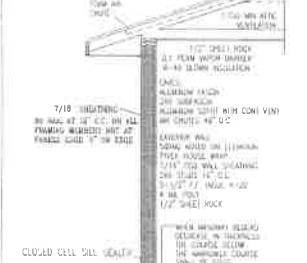
BRACED WALL
 PLATE FASTENED TO FOUND W/ 3" DIA. WOOD W/ 16" O.C. FULL HEIGHT BRACING 16" O.C. 2" X 4" STUDS FASTENED TO SOLID FRAMING W/ 3" DIA. WOOD W/ 16" O.C. BOTTOM PLATE FASTENED TO SOLID FRAMING W/ 3" DIA. WOOD W/ 16" O.C. ALL WALLS SHALL BE CONTINUOUSLY STRENGTHENED WITH WOOD STRUCTURAL PANELS 2" CS-WSP ON FRAMES INDICATE ANGLES OF BRACED PANELS 3" BRACED PANELS SHALL BE CONSTRUCTED WITH 1" O.C. STUDS TOP PLATES FASTENED TO SOLID FRAMING WITH 16" WOOD W/ 16" O.C. BOTTOM PLATE FASTENED TO SOLID FRAMING WITH 16" WOOD W/ 16" O.C. ALL CORNER WALLS 8" O.C. ON CORNER AND 16" O.C. IN FIELD 3" X 4" BRACING BETWEEN STUDS WITH HOLE GREATER THAN 1/4" DIA. WITHIN 2" OF ROOF SHEATHING FASTENED WITH 16" WOOD W/ 16" O.C. ALONG LENGTH OF PANEL 4. ANY OTHER TYPE OF BRACING METHOD SHALL BE INDICATED ON PLAN AND SEPARATE DETAIL WILL BE PROVIDED

CONTRACTOR: BICELOW/LENNON
 PROJECT: H.O.Z. 2ND L-12,11 B-2
 DATE: 10/11/27

REINFORCING STEEL SHALL BE #4 WITH
TYPESPEC WITH EACH BAR.

MINIMUM WALL THICKNESS SHALL BE 12"
UNLESS SHOWN OTHERWISE.

MADE IN U.S.A.
MINIMUM WALL THICKNESS SHALL BE 12"
UNLESS SHOWN OTHERWISE.
PROVIDE HURRICAN ANCHORS ON ALL
BRUSSES 26'-0" ON CENTER IN SPAN.



EXTERIOR WALL DETAIL
SCALE = 1/2"

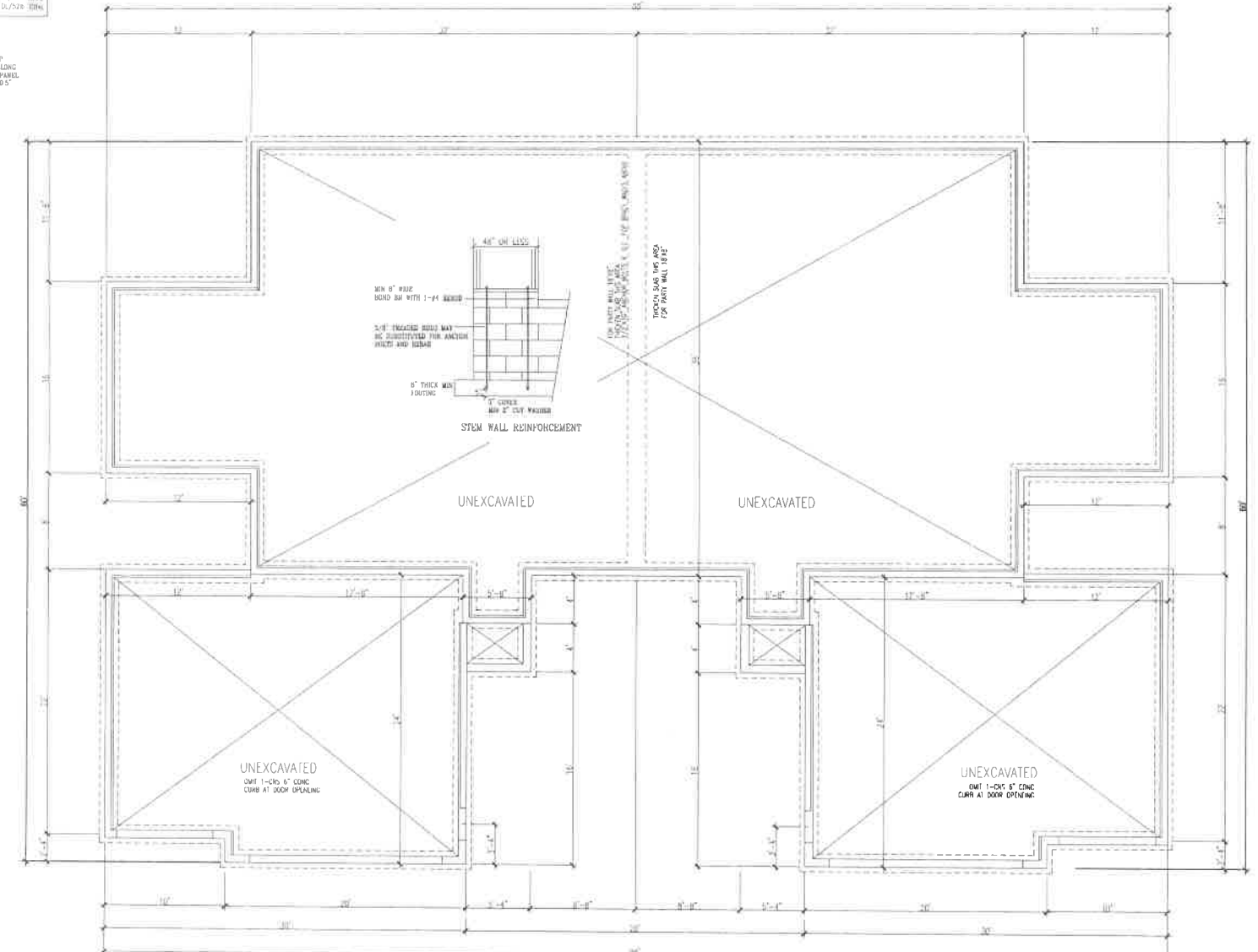
GARAGE WALL
CONCRETE WITH 12" MIN. WALL THICKNESS
REINFORCED WITH #4 BARS AT 12" O.C.
MINIMUM WALL THICKNESS SHALL BE 12"
UNLESS SHOWN OTHERWISE.



GARAGE FOUNDATION
12" MIN. CONCRETE FOOTING
4" MIN. CONCRETE BLOCK
12" MIN. CONCRETE BLOCK
12" FROM LAP OF EACH PLATE
26' TO 42' SLOTTED STEEL PLATE

FOUNDATIONS
MINIMUM WALL THICKNESS SHALL BE 12"
UNLESS SHOWN OTHERWISE.

SUBSIDIARY
ALL JOINTS DAMPED MINIMUM 12"
ALL PENETRATIONS THROUGH SLAB AND FOUNDATIONS
4" WATER OR CLEAN APPROPRIATE BELOW SLAB AND WALLS
PASS THROUGH A 2" SINK AND BE RETAINED BY 1/4" SINK



1,367.00 SQ. FT.

FOUNDATION PLAN
SCALE 1/4"=1'-0"

1,367.00 SQ. FT.

FOUNDATION PLAN
SCALE 1/4"=1'-0"

RESIDENTIAL ARCHITECTURE
1001 W. 15TH ST., SUITE 200
DENVER, CO 80202

PROJ. NO. 2011-11 B-2

REV	DATE	DESCRIPTION
3-20-10		NOTED
10/11/07		NOTED
		NOTED