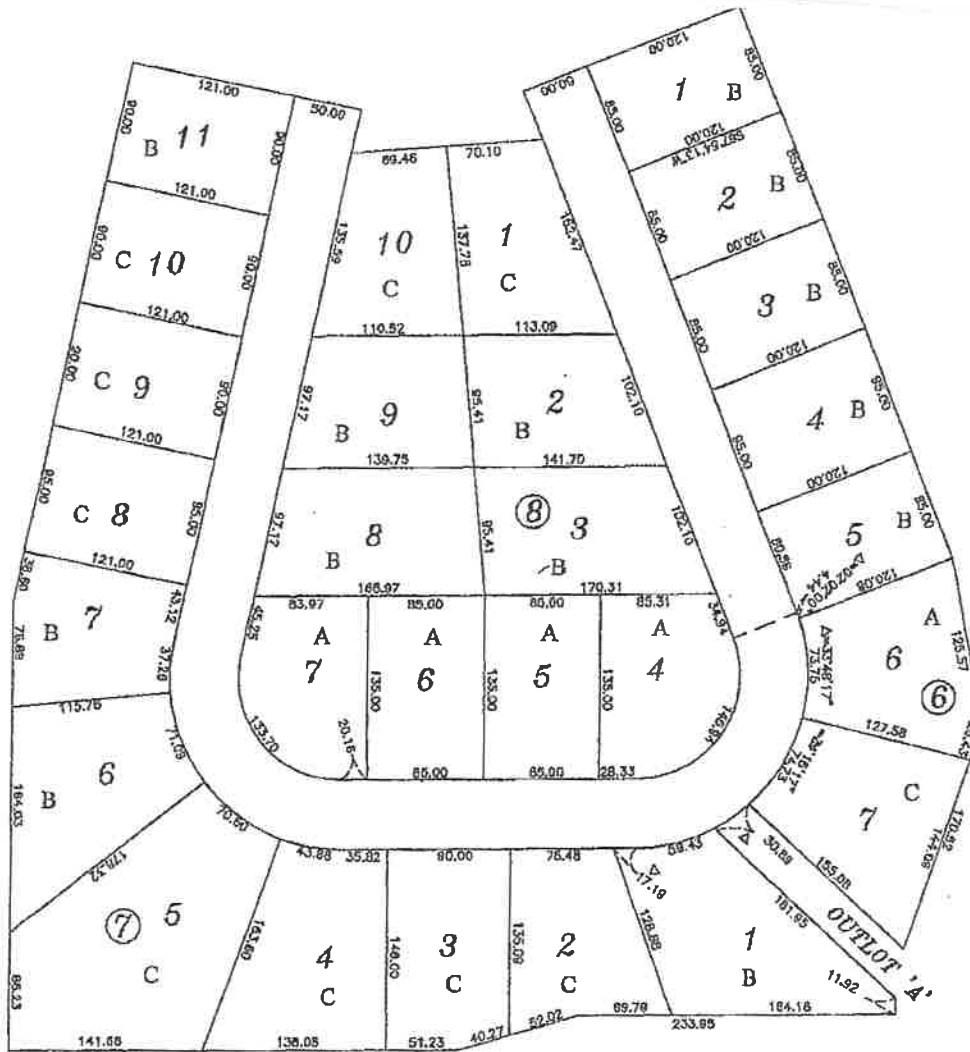


Bigelow and Lennon Construction, LLC
211 1st St. SW
Byron, MN 55920

Highlands of Zumbrota West - First

GOLF COURSE



GOLF COURSE

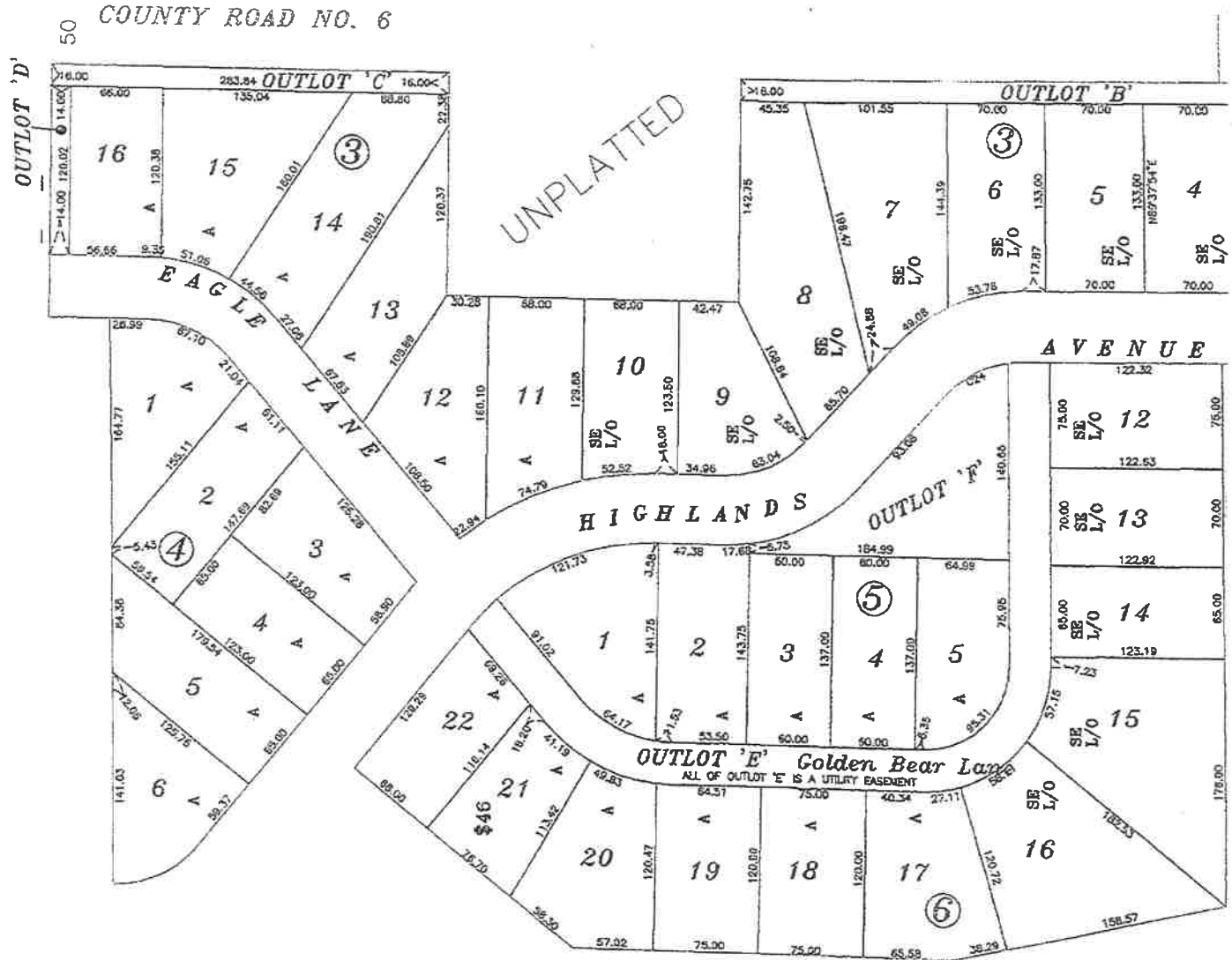
Lot styles, prices, and availability
subject to change without notice.

- A= Flat Lot
- B= Split Entry Walk Out
- C= Full Basement Walk Out

GOLF COURSE

Bigelow and Lennon Construction, LLC
211 1st St. SW
Byron, MN 55920

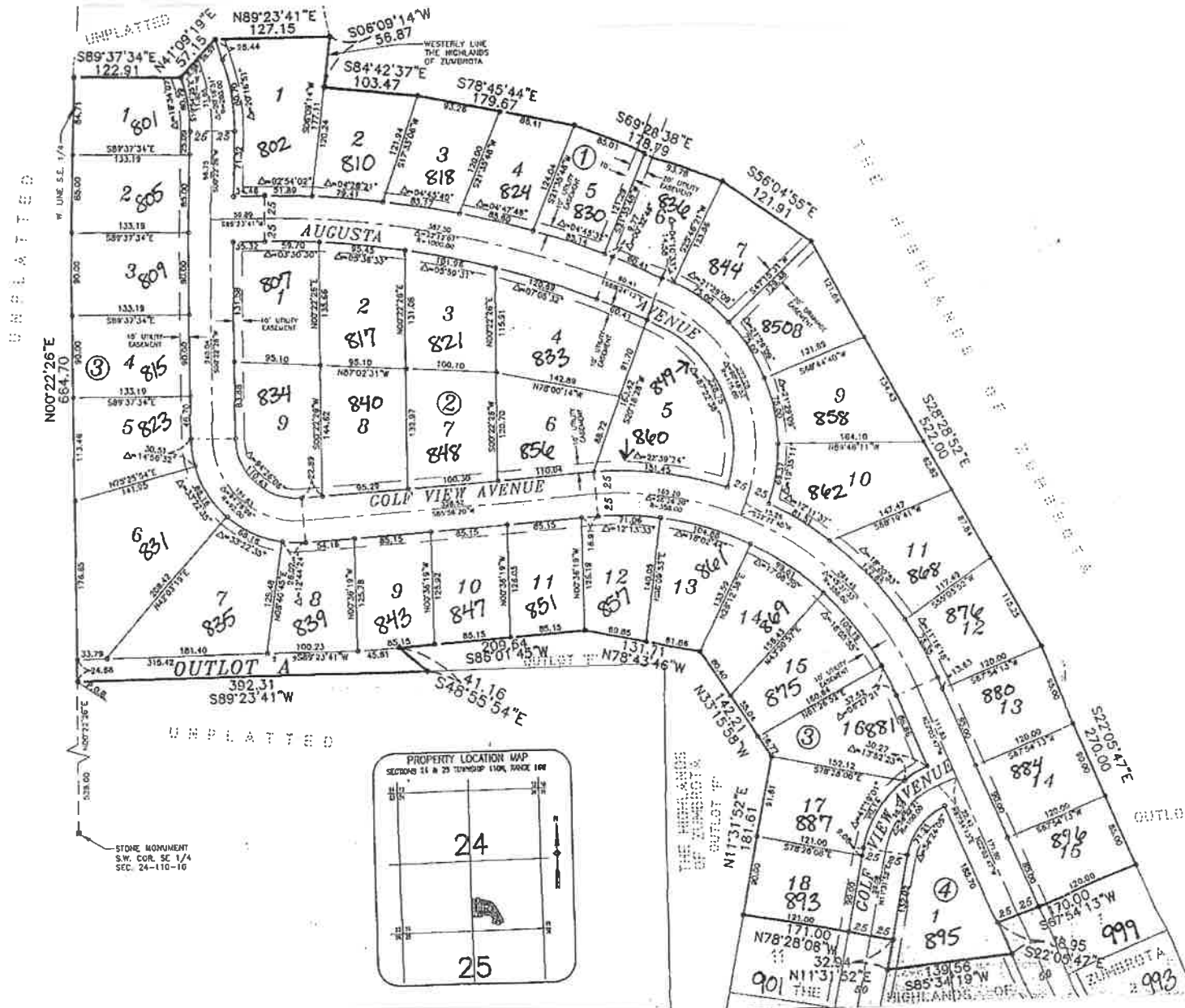
Highlands of Zumbrota Second



GOLF COURSE

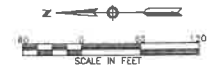
Bigelow and Lennon Construction, LLC
 211 1st St. SW
 Byron, MN 55920

Highlands of Zumbrota Third



Bigelow and Lennon Construction, LLC
 211 1st St. SW
 Byron, MN 55920

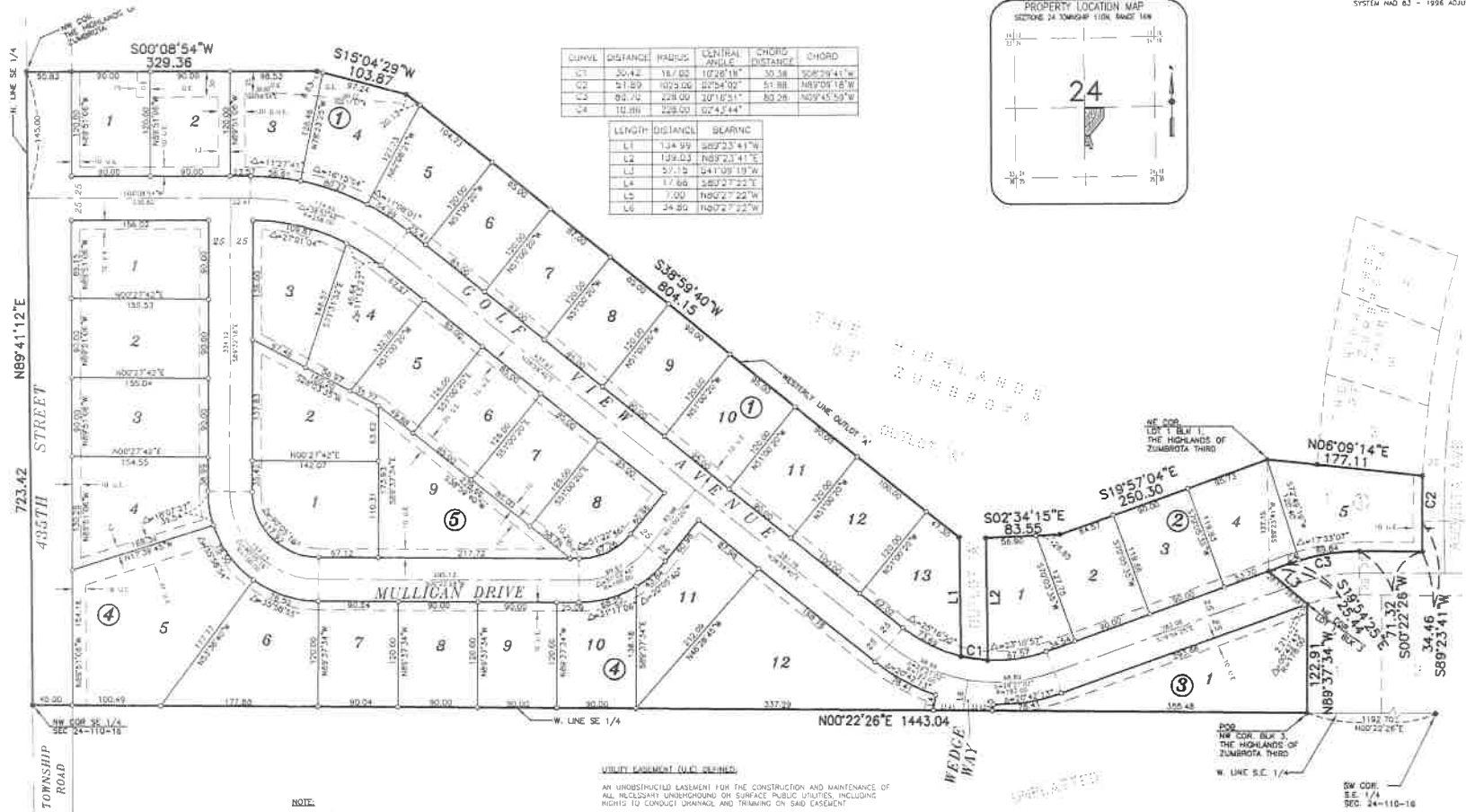
Highlands of Zumbrota Fourth



THE BEARINGS SHOWN HEREON ARE ORIENTED TO THE COODRAGE COUNTY COORDINATE SYSTEM NAD 83 - 1996 ADJUSTMENT

CURVE	DISTANCE	RADIUS	CENTRAL ANGLE	CHORD DISTANCE	CHORD
C1	30.42	18.00	102°46'18"	30.38	S28°29'41"W
C2	51.89	1025.00	0°25'4.00"	51.88	N89°05'18"W
C3	82.70	228.00	10°18'51"	83.28	N07°45'59"W
C4	10.88	228.00	0°2'44"		

LENGTH	DISTANCE	BEARING
L1	1.3499	S89°23'41"E
L2	1.0903	N89°23'41"E
L3	27.13	S41°08'19"W
L4	1.786	S89°27'22"E
L5	7.00	N89°27'22"W
L6	24.85	N89°27'22"W



NOTE:
 ALL MONUMENTS SHOWN THIS ○
 ARE 3/8" I.D. CAPPED PIPES WITH LICENSE NO. 10087
 WHICH WILL BE SET WITHIN 1 YEAR AFTER RECORDING OF THIS
 PLAT.
 ALL MONUMENTS SHOWN THIS ●
 ARE 1" D.I.D. IRON MONUMENTS UNLESS OTHERWISE NOTED.

UTILITY EASEMENT (U.E.) DEFINED:
 AN UNDERSHOWN EASEMENT FOR THE CONSTRUCTION AND MAINTENANCE OF
 ALL NECESSARY UNDERGROUND OR SURFACE PUBLIC UTILITIES, INCLUDING
 RIGHTS TO CONDUIT, DRAINAGE, AND TRENCH ON GAB EXISTENT.

DRAINAGE EASEMENT (D.E.) DEFINED:
 AN UNDERSHOWN EASEMENT FOR THE OPERATION AND MAINTENANCE OF
 DRAINAGE, BOTH SURFACE AND UNDERGROUND, RUNNING OVER, ACROSS,
 AND UNDER GAB EXISTENT.

DRAINAGE AND UTILITY EASEMENT (D.U.E.)

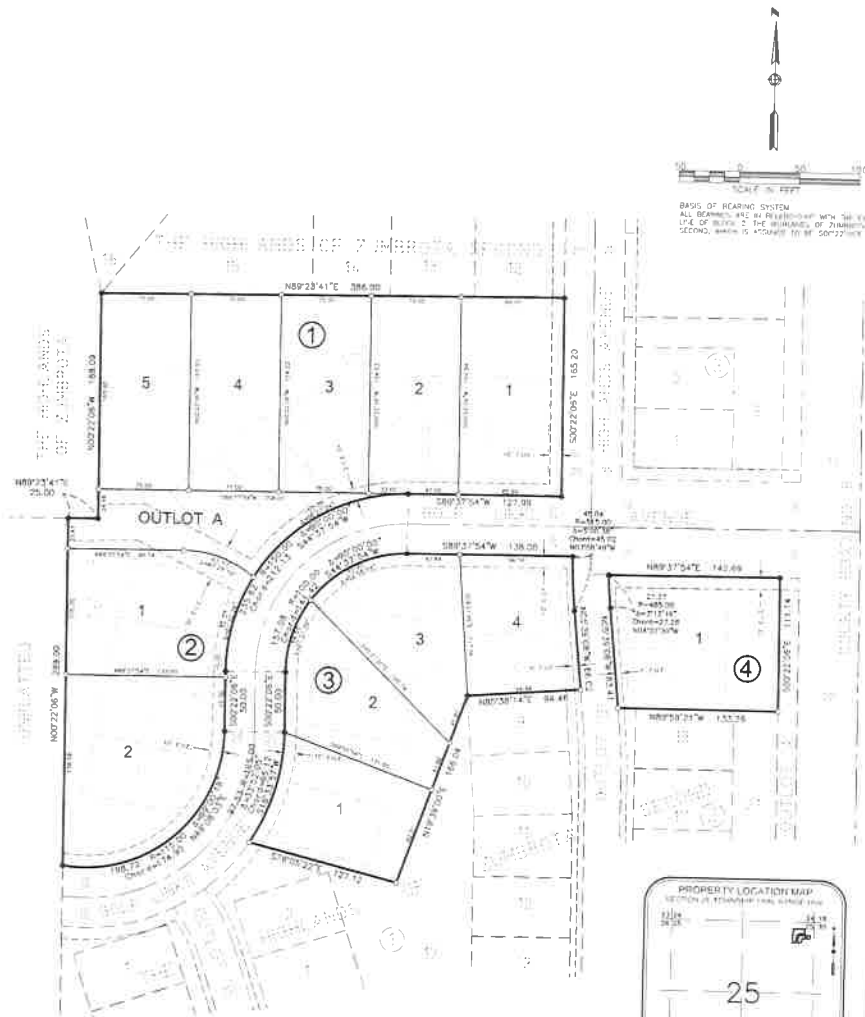
McGhie & Bohn, Inc.
 1648 Third Avenue SE
 Rochester, MN 55904
 Telephone: 507-289-9818
 Fax: 507-289-7333
 mb@mcgchiebohn.com

McGhie
 & Bohn, Inc.

Land Surveying
 Civil Engineering
 Consulting
 Land Planning
 Geotechnical Engineering
 Construction Material Testing
 Landscape Architecture

Bigelow and Lennon Construction, LLC
 211 1st St. SW
 Byron, MN 55920

Highlands of Zumbrota Fifth



BASE OF BEARING SYSTEM
 ALL BEARINGS ARE IN REFERENCE WITH THE 1983 EPOCH
 LINE OF BENCH 2, THE REMAINS OF ZUMBROTA
 SECOND, WHICH IS ASSUMED TO BE 50°22'10.00"

NOTE
 ALL MONUMENTS SHOWN "THIS O"
 ARE 5/8" I.D. CHISEL POINT ALUMINUM RODS
 WHICH WILL BE SET WITHIN 1 YEAR AFTER RECORDING OF THIS PLAT
 ALL MONUMENTS SHOWN "THIS ●"
 ARE FOUND 5/8" I.P.P.S. UNLESS OTHERWISE NOTED

E.U.E. - EXISTING UTILITY EASEMENT



McGhin & Betts, Inc. 1648 Third Avenue S.E. Rochester, MN 55904 Telephone: 507-289-3919 Fax: 507-284-7333 mb@mcghinbetts.com		Land Surveying Civil Engineering Consulting Land Planning Geotechnical Engineering Construction Material Testing Landscape Architecture
---	--	---