

Woodcliffe

Open and Spacious Main Floor

Full Brick Front Entry

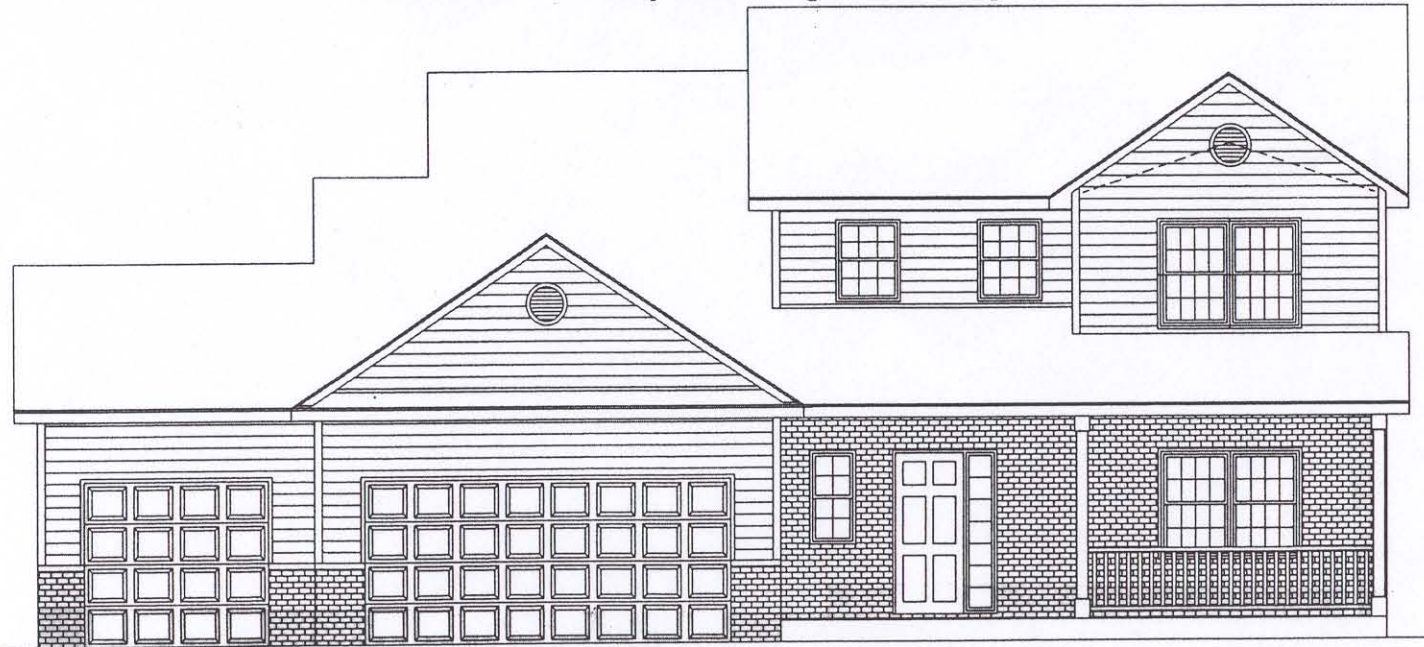
Screened-In Porch for Comfortable Indoor-Outdoor Living

Huge Vaulted Master Suite -- His & Her Walk-In Closets -- Corner Whirlpool

Large Kitchen with Center Island ♦ Gas Fireplace with Brick Surround

3,295 Total Sq. Ft.

Price: \$262,000* (Plus Lot)



Bigelow-Lennon

Construction & Associates

BC 2533

211 1st Street NW

Byron, MN 55920

Phone (507) 775-7068 Fax (507) 775-6083

SPECIAL FEATURES

- * Marvin Integrity windows
- * Front porch with railing
- * 3 bedroom / 2 1/2 bath
- * 6-Panel solid oak doors on main floor
- * Separate main floor laundry
- * 9' main floor walls
- * Central air conditioning
- * Digital programmable set-back thermostat
- * Large lower level for future recreation area, bedroom and bath
- * Energy efficient home with maintenance free exterior
- * Optional walk-out
- * Full concrete driveway

*Price, plans and specifications subject to change without notice.

